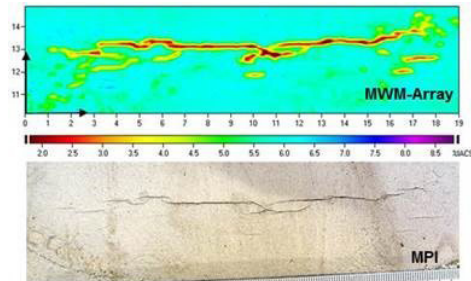


# AUTOMATED CRACK MAPPING & DEPTH SIZING

## USING MWM-ARRAY EDDY CURRENT TESTING & GRIDSTATION 8200



GridStation 8200



Flexible **MWM®-Array** Technology provides

- *BEST* detection performance
- *VERY LOW* false indication rates
- *REDUCED* surface preparation
- “*HUGE*” Return on Investment (ROI)

# JENTEK® Sensors, Inc.

Crack Depth  
Algorithm  
Manager

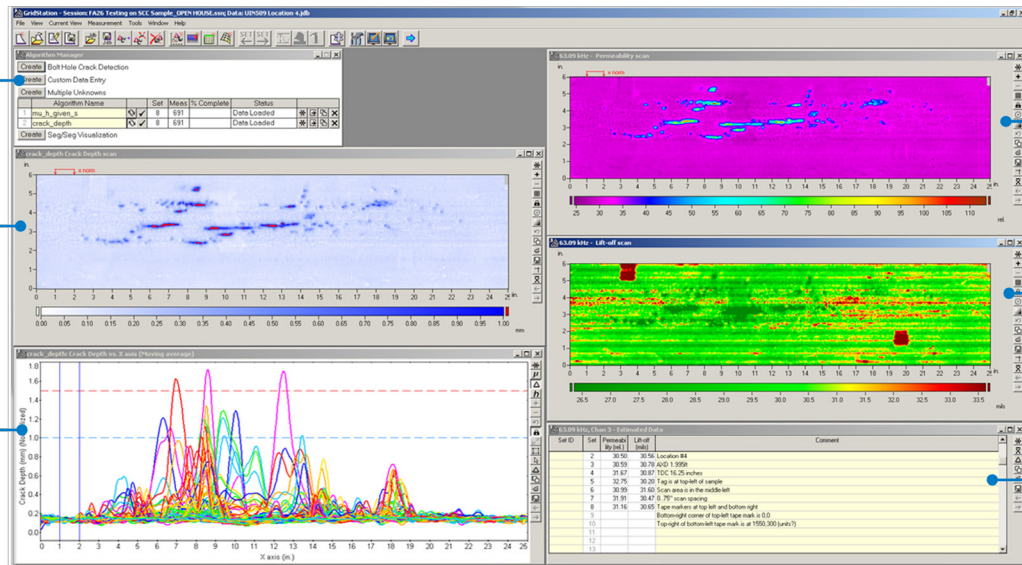
Crack Depth  
C-Scan

Crack Depth  
B-Scan

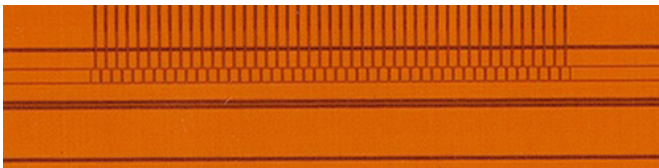
Permeability  
C-Scan

Lift-Off  
C-Scan

Scan Notes



Example Stress Corrosion Crack (SCC) imaging solution, illustrating crack mapping and crack depth



MWM-Array for high resolution imaging and depth sizing of axial and circumferential flaws, including SCC



MWM-Array for high resolution surface crack imaging of SCC colonies

## JENTEK 8200 System for Crack Mapping and Depth Sizing - General Specifications

|                          |   |
|--------------------------|---|
| Pipe Material            | Carbon steel, including ASTM A106, ASTM A53, and API 5L*  |
| Pipe Wall Thickness      | No restriction (external crack detection and sizing only)   |
| Pipe Diameter (Range)    | 8 inch or larger using standard manual scanner   1 inch or larger when used without a scanner   |
| Coating Type & Thickness | Detection through up to 0.25 inches   Sizing through up to 0.050 inches<br>Coating can be any non-conductive material (paint, coal tar enamel, FBE, etc.)   |
| Inspection Scan Speed    | Up to 6 in./sec<br>Typical scan speeds<br>3 in./sec with a 1.10 inch scan path for crack mapping<br>3 in./sec with a 1.38 inch scan path for crack depth measurement<br>6 in./sec with a 4.75 inch scan path for detection through coatings |
| Detection Threshold      | Up to 0.20 inch (max. crack depth) or 75% of pipe wall, whichever is smaller  |
| Components               | 39 Channel IN8200 Instrument<br>39 Channel Modular Inductive Probe Electronics Unit<br>39 Channel MWM-Array Sensors<br>Laptop (Microsoft Windows™ with GridStation software)  |
| Weight (Instrument Only) | 6 lbs. (2.72 kg) for 39 Channels  |

\*Other modules available for stainless steel, nickel, and other alloys

## Automated Crack Mapping Scanner - General Specifications

|                               |   |
|-------------------------------|---|
| Weld Inspection               | Customized sensor cartridge may be required                 |
| Through Coatings              | Detection Only  |
| Hi-Res Mapping & Depth Sizing | With coatings removed, but with minimal surface preparation |

JENTEK GridStation advanced eddy-current inspection systems have been called **“the gold standard”** of inspections at U.S. Navy Depots.

# JENTEK® Sensors, Inc.

121 Bartlett Street, Marlborough, MA 01752-3025  
781-373-9700 • [jentek@jenteksensors.com](mailto:jentek@jenteksensors.com)

For more information, please visit us at  
[www.jenteksensors.com](http://www.jenteksensors.com)

GridStation, MWM, and JENTEK are registered trademarks of JENTEK Sensors, Inc.

JENTEK Issued patents include U.S. Patent #s: 10,001,457, 9,823,179, 9,772,309, 9,279,784, 9,255,875, 9,207,131, 8,981,018, 8,960,012, 8,928,316, 8,803,515, 8,768,657, 8,494,810, 8,237,433, 8,222,897, 8,050,883, 7,994,781, 7,876,094, 7,812,601, 7,696,748, 7,589,526, 5,533,575, 7,528,598, 7,526,964, 7,518,360, 7,467,057, 7,451,657, 7,451,639, 7,411,390, 7,385,392, 7,348,771, 7,289,913, 7,280,940, 7,230,421, 7,188,532, 7,183,764, 7,161,351, 7,161,350, 7,106,055, 7,095,224, 7,049,811, 6,995,557, 6,992,482, 6,952,095, 6,798,198, 6,784,662, 6,781,387, 6,727,691, 6,657,429, 6,486,673, 6,433,542, 6,420,867, 6,380,747, 6,377,039, 6,351,120, 6,198,279, 6,188,218, 6,144,206, 5,966,011, 5,793,206, 5,629,621, 5,990,677, and RE39,206 (other patents pending).

Windows is a registered trademark of Microsoft Corporation in the United States and other countries.